


Technical data

	Max. working height	Max. working outreach, approx.	Max. safe working load	Transportation height, approx.	Transportation length, approx.	Transportation width, approx.	GVW
S 38 XDT	38 m	27 m	700 kg	3,7 m	10 m	2,5 m	18000 kg
S 46 XDT	46 m	25 m	700 kg	3,7 m	10 m	2,5 m	18000 kg
S 53 XDT	53 m	35 m	700 kg	3,8 m	12 m	2,5 m	26000 kg
S 61 XDT	61 m	37 m	700 kg	3,9 m	12 m	2,5 m	32000 kg
S 70 XDT	70 m	36 m	700 kg	4,0 m	12 m	2,5 m	33000 kg
S 78 XDT	78 m	37 m	700 kg	4,0 m	13 m	2,5 m	41000 kg

Features

- 700 kg cage load
- Telescopic main boom and telescopic cage boom made from rigid, high strength steel. Spacious energy chain inside the boom capable of incorporating a variety of additional cables and hoses
- All XDT Range machines are suitable to be mounted on the most economical chassis in its class (2, 3, and 4 axle chassis). All wheel configuration available on request
- Excellent height / weight ratio.
- Compact and versatile design. Cage boom folds next to the main boom for extra low transport height, cage folds underneath main boom for shortest possible transport length
- Geometry based outreach limitation system, giving exactly identical outreach under all circumstances, regardless of external influences (e.g. temperature, wind, dynamic forces, friction, etc.)
- Fully-variable H type jacking with excellent levelling capacity and real time display of outreach values at the outrigger control centre
- Fully-automatic jacking and levelling with remote control
- Accurate, sensitive and fast movements thanks to the advanced Bronto+ control system
- Main control panel in the cage, secondary and outrigger control panel with good overview of all outriggers located at the rear. All panels well protected against weather and backlight illuminated
- 2 x TFT 6.5" colour displays at control panels with all vital operational information
- Variable cage load with real time display of actual cage load
- Multiple working cage system
- Cage rotation 90 degrees
- Fault finding system
- 2 alternative emergency operation systems
- Four outrigger ground plates with brackets
- Engine start-stop from all control panels
- Full outreach even if the unit is levelled with +/- 0,5 degree inaccuracy

Options

- Hydraulically extendable cage (up to 3.7 m)
- Wireless remote control
- Cage winch
- Boom winch
- Height limitation in 0,5 m steps with access key
- Memory function
- Bronto Telecontrol remote diagnostic system
- Working lights
- Electric drive
- Biological hydraulic oil
- Intercom
- Hydraulic or petrol driven generator up to 10 kW
- Triax video cable
- External cable hooks
- Working time lock
- Theft protection
- Additional options on request



BRONTO SKYLIFT OY AB
Teerivuorenkatu 28
FI-33300 TAMPERE
Finland
Tel +358 20 7927 111
Fax +358 20 7927 300
www.bronto.fi

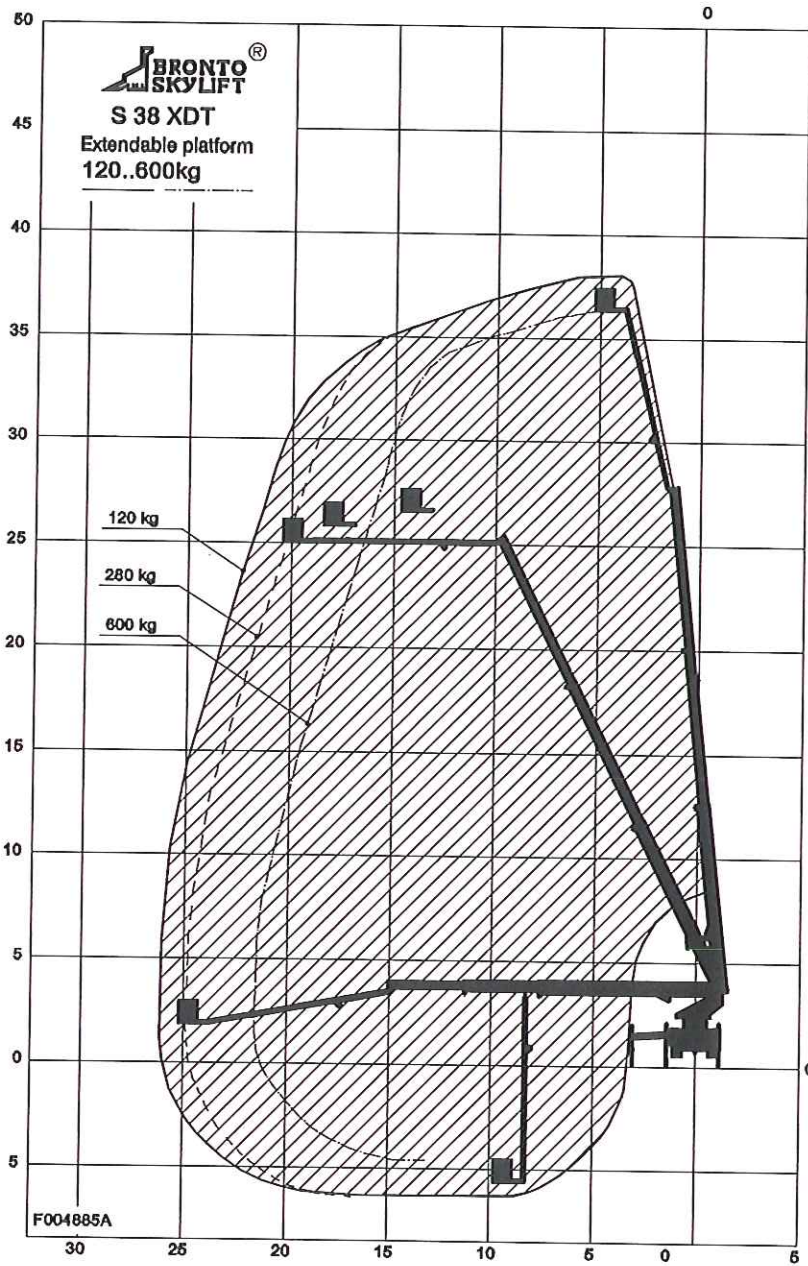
BRONTO SKYLIFT AB
Okvistavägen 38
SE-18640 VALLENTUNA
Sweden
Tel +46 8 5816 6040
Fax +46 8 5816 6035
www.bronto.se

BRONTO SKYLIFT AG
Ifangstrasse 111
CH-8153 RÜMLANG
Switzerland
Tel +41 44 818 8040
Fax +41 44 818 8050
www.bronto.ch



Alterations reserved.

A subsidiary of Federal Signal Corporation



TECHNICAL DATA

Safe working load max. : 600 kg

Max. permitted wind speed : 12.5 m/s

Typical GVW : 18 ton

min. operating weight : 17 ton

Outrigger width and length c/c

- normal jacking : 6.2/5.7 m
- one side jacking : 4.2/5.7 m
- narrow jacking : 2.8/5.7 m

Calculation code :